 visit\_richmond1

 Visit Richmond, London

 visitrichmond

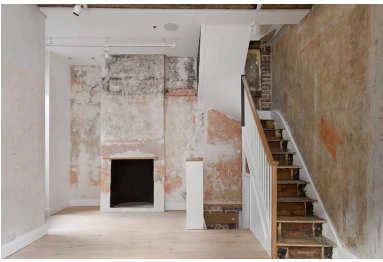
# OPEN HOUSE FESTIVAL

programme.openhouse.org.uk

 LONDON BOROUGH OF  
RICHMOND UPON THAMES

 Visit  
Richmond

www.visitrichmond.co.uk



## One Paved Court Gallery

*Drop in 13<sup>th</sup>, 14<sup>th</sup> 20<sup>th</sup>  
and 21<sup>st</sup> September*  
Allies and Morrison,  
2017

**1 PAVED COURT,  
RICHMOND, TW9 1LZ**



## The Lock House, Richmond Lock & Weir

Infrastructure, Engineering  
*Drop in 14<sup>th</sup>, 19<sup>th</sup> and 20<sup>th</sup>  
September*

Hunt & Steward (1894) and  
Astronaut Kawada (2024),  
1894

**THE LOCK HOUSE,  
RANELAGH DRIVE, TW1 1QZ**



## Richmond: From Royal Playground to Homes and Industry

Walk, Tour  
*Walking Tour 19<sup>th</sup>  
September*

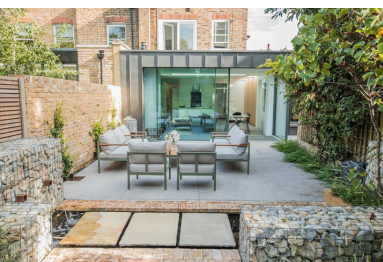
Roger Morris, 1729  
**MARBLE HILL HOUSE,  
RICHMOND ROAD,  
TWICKENHAM TW1 2NL**



## Royal Botanic Gardens, Kew - Herbarium

*Guided tour 13<sup>th</sup> and  
14<sup>th</sup> September*  
1750

**KEW, TW9 3AE**



## Private House and Summer House

Residence

*Drop in 13<sup>th</sup> September*  
dplusstudios Ltd, 2023

**85 HOLMESDALE  
ROAD, TW11 9LQ**



## St Richard's Church, Ham

Religious

*Drop in 14<sup>th</sup> September*  
Ralph Covell (Covell  
Matthews Partnership),  
1966

**ASHBURNHAM ROAD,  
HAM, RICHMOND,  
TW10 7NL**



## 80 Mallard Place, Twickenham

Housing

*Drop in 13<sup>th</sup> and 15<sup>th</sup>  
September*

Eric Lyons and Span  
Developments, 1982  
**80 MALLARD PLACE,  
TWICKENHAM, TW1  
4SR**



## Flood Meadows at Hampton Court

Walk, Tour

*Walking tour 18<sup>th</sup>  
September*

**1 HAMPTON COURT  
ROAD, HAMPTON  
WICK, MOLESEY, KT1  
4AE**



## St Peter's Church Petersham

Religious

*Drop in 21<sup>st</sup> September*  
1505

**CHURCH LANE,  
RICHMOND, TW10 7AB**



## Bethlehem Chapel

Religious

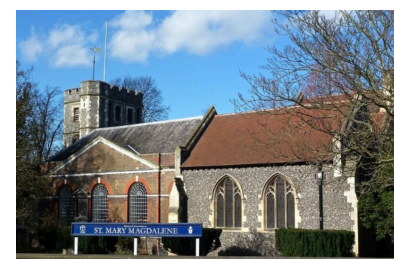
*Drop in 20<sup>th</sup> September*  
John Chapman, 1797  
**CHURCH TERRACE,  
RICHMOND, TW10 6SE**



## Air Raid Shelter, St Leonards Court

Miscellaneous

*Drop in 14<sup>th</sup> September*  
Philip A W Roffey, 1939  
**PALMERS ROAD, EAST  
SHEEN, SW14 7NG**



## St Mary Magdalene Religious

*Drop in 13<sup>th</sup> September*  
Unknown, 1506  
**PARADISE ROAD,  
RICHMOND, TW9 1SN**





### **Kew House**

Residence

*Open day 13<sup>th</sup> and 14<sup>th</sup>  
September*

Piercy & Company, 2014

**10 CAMBRIDGE ROAD, KEW, TW9  
3JB**



### **The Poppy Factory**

Industrial

*Open day 16<sup>th</sup> September*  
Douglas Wood, 1933

**20 PETERSHAM ROAD,  
RICHMOND, SURREY, TW10 6UR**



### **St Anne's Church, Kew Green**

Religious

*Drop in 17<sup>th</sup>, 18<sup>th</sup>, 19<sup>th</sup>, 20<sup>th</sup> and  
21<sup>st</sup> September*

Unknown, 1714

**KEW GREEN, TW9 3AA**



### **Burton Mausoleum**

Cemetery, Religious

*Drop in 14<sup>th</sup> September*

Isabel Arundell Burton, 1890

**ST MARY MAGDALEN'S RC  
CHURCH, TW9 1SN**



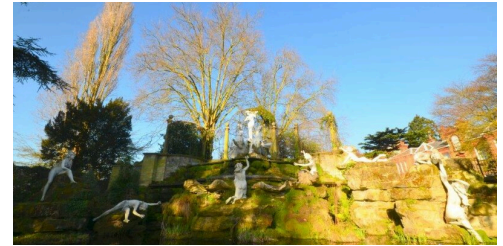
### **St John the Divine**

Religious

*Guided tour 13<sup>th</sup> and 20<sup>th</sup>  
September*

Lewis Vulliamy, 1831

**18-20 KEW ROAD, RICHMOND,  
TW9 2NA**



### **York House**

Historical House

*Drop in 14<sup>th</sup> September*

Unknown, 1650

**RICHMOND ROAD,  
TWICKENHAM, TW1 3AA**



### **Twickenham Museum**

Museum

*Drop in 13<sup>th</sup> and 20<sup>th</sup> September*

Anthony Beckles Willson, 1720

**25 THE EMBANKMENT,  
TWICKENHAM, TW1 3DU**



### **The Old Town Hall, Richmond**

Community, Cultural

*Guided tours 13<sup>th</sup> September*

W. J. Ancell, 1893

**OLD TOWN HALL, WHITTAKER  
AVENUE, RICHMOND, TW9 1TP**



### **Langdon Down Centre**

Theatre

*Open day 20<sup>th</sup> September*

Rowland Plumbe, 1877

**LANGDON DOWN CENTRE, 2A  
LANGDON PARK, TEDDINGTON,  
TW11 9PS**



### **Kilmorey Mausoleum**

Cemetery, Garden

*Drop in 14<sup>th</sup> September*

H. E. Kendall, 1854

**275 ST MARGARET'S ROAD  
(OPPOSITE AILSA TAVERN), TW1  
1NJ**



### **Grove Gardens Chapel**

Community, Cultural, Religious

*Drop in 14<sup>th</sup> September*

Sir Arthur Blomfield, 1875

**RICHMOND CEMETERY, GROVE  
GARDENS, LOWER GROVE ROAD,  
TW10 6HP**



### **Garrick's Temple to Shakespeare, Hampton**

Museum

*Drop in 14<sup>th</sup> and 21<sup>st</sup> September*

Unknown, 1756

**GARRICK'S LAWN, HAMPTON  
COURT ROAD, HAMPTON, TW12  
2EN**